



中国认可
国际互认
检测
TESTING
CNAS L7877

TEST REPORT

No.: SDFTS25001832R01_EN

Date: Apr 23,2025

Page 1 of 5

WOVEN IMAGE INTERIOR MATERIAL (SHANGHAI) CO., LTD

ROOM 103, BDG B, NO. 3039 LIYUE ROAD, PUJIANG TOWN, MINHANG DIST, SHANGHAI, CHINA

Sample Description	: 3D & EMBOSSED PANEL IX
Thickness	: 9mm (+/- 7%)
Density	: 2385 GSM, APPROXIMATELY 7.59kg/PANEL (+/- 10%)
Composition	: •84% 2000GSM ZETA = 100% PET (50% PC RECYCLED, 40% VIRGIN LM, 10% F/R) •14.5% 350GSM MURA = 100% PET (60% PC RECYCLED) •1.5% 35GSM SCATTER GLUE = 100% PE

The above sample(s) data and information was / were submitted and identified on behalf of the client. SGS is not responsible for the authenticity, integrity and results of the data and information and / or the validity of the conclusion arising therefrom. Results apply to the sample as received.

Sample Receiving Date	: Apr 01,2025
Testing Period	: Apr 01,2025 to Apr 23,2025
Test Required	: BS EN 13501-1:2018 Fire classification of construction products and building elements—Part 1: Classification using data from reaction to fire tests.
Test result(s)	: See attached sheet

Signed for and on behalf of
SGS-CSTC Standards Technical Services Co., Ltd. Shunde Branch

Ada

Ada Liu
Approved signatory



Unless otherwise agreed in writing, this document is issued by the Company subject to its General Conditions of Service printed overleaf, available on request or accessible at <https://www.sgs.com/en/Terms-and-Conditions>. Attention is drawn to the limitation of liability, indemnification and jurisdiction issues defined therein. Any holder of this document is advised that information contained hereon reflects the Company's findings at the time of its intervention only and within the limits of Client's instructions, if any. The Company's sole responsibility is to its Client and this document does not exonerate parties to a transaction from exercising all their rights and obligations under the transaction documents. This document cannot be reproduced except in full, without prior written approval of the Company. Any unauthorized alteration, forgery or falsification of the content or appearance of this document is unlawful and offenders may be prosecuted to the fullest extent of the law. Unless otherwise stated the results shown in this test report refer only to the sample(s) tested and such sample(s) are retained for 30 days only.

Attention: To check the authenticity of testing / inspection report & certificate, please contact us at telephone: (86-755) 8307 1443, or email: CN.Doccheck@sgs.com

1-2/F, Building 1, European Industrial Park, No.1, Shunhe South Road, Wusha, Daliang, Shunde District, Foshan, Guangdong, China 528300
中国·广东·佛山市顺德区大良街道办事处五沙社区居民委员会顺和南路1号欧洲工业园一号楼首层、二层 邮编: 528300

t (86-757) 22805888 www.sgsgroup.com.cn
t (86-757) 22805888 sgs.china@sgs.com

Member of the SGS Group (SGS SA)

I. Test conducted

This test is conducted as per BS EN 13501-1:2018 Fire classification of construction products and building elements — Part 1: Classification using data from reaction to fire tests. And the test methods as following:

1. EN 13823:2020+A1:2022 Reaction to fire tests for building products - Building products excluding floorings exposed to the thermal attack by a single burning item.
2. EN ISO 11925-2:2020 Reaction to fire tests — Ignitability of products subjected to direct impingement of flame — Part 2: Single-flame source test.

II. Details of classified product

Sample Description	Panel
Color	See photos
Thickness	9.0 mm
Area density	2.70 kg/m ²

Mounting and fixing:

Test substrate was calcium silicate board meets the requirement of EN13501-1, of Class A2-s1,d0, the density of 900 kg/m³ and thickness of 10mm.

Specimen was installed on the substrate by screw. There was no joint between specimens. Specimen had a distance of at least 80mm from the backing board.

III. Test results

Test methods	Parameter	Number of tests	Results
EN 13823	FIGRA _{0.2MJ} (W/s)	3	68.9
	FIGRA _{0.4MJ} (W/s)		68.9
	Whether lateral flame spread (LFS) to the edge of specimen (Yes/No)		No
	THR _{600s} (MJ)		5.3
	SMOGR (m ² /s ²)		8.4
	TSP _{600s} (m ²)		44.6
	Flaming particles or droplets (Yes/No)		No
EN ISO 11925-2 Exposure = 30 s	Fs≤150mm within 60 s (Yes/No)	12	Yes
	Ignition of the filter paper (Yes/No)		No

Note:

FIGRA_{0.2MJ} - Fire growth rate index at THR threshold of 0,2 MJ [W/s]

FIGRA_{0.4MJ} - Fire growth rate index at THR threshold of 0,4 MJ [W/s]

THR_{600s} -Total heat release within 600 s [MJ]

Unless otherwise agreed in writing, this document is issued by the Company subject to its General Conditions of Service printed overleaf, available on request or accessible at <https://www.sgs.com/en/Terms-and-Conditions>. Attention is drawn to the limitation of liability, indemnification and jurisdiction issues defined therein. Any holder of this document is advised that information contained hereon reflects the Company's findings at the time of its intervention only and within the limits of Client's instructions, if any. The Company's sole responsibility is to its Client and this document does not exonerate parties to a transaction from exercising all their rights and obligations under the transaction documents. This document cannot be reproduced except in full, without prior written approval of the Company. Any unauthorized alteration, forgery or falsification of the content or appearance of this document is unlawful and offenders may be prosecuted to the fullest extent of the law. Unless otherwise stated the results shown in this test report refer only to the sample(s) tested and such sample(s) are retained for 30 days only.

Attention: To check the authenticity of testing /inspection report & certificate, please contact us at telephone: (86-755) 8307 1443, or email: CN.Doccheck@sgs.com

1-2/F, Building 1, European Industrial Park, No.1, Shunhe South Road, Wusha, Daliang, Shunde District, Foshan, Guangdong, China 528300

t (86-757) 22805888

www.sgsgroup.com.cn

中国·广东·佛山市顺德区大良街道办事处五沙社区居民委员会顺和南路1号欧洲工业园一号厂房首层、二层 邮编: 528300

t (86-757) 22805888

sgs.china@sgs.com

SMOGRA - Smoke growth rate [m^2/s^2]

TSP_{600s}- Total smoke production within 600 s [m^2]

IV. Classification and field of application

a) Reference of classification

This classification has been carried out in accordance with **BS EN 13501-1:2018**.

b) Classification

The product, 3D & Embossed Panel IX (as described by the sponsor), in relation to its reaction to fire behaviour is classified:

Fire behaviour		Smoke production			Flaming droplets	
B	—	s	1	,	d	0

Reaction to fire classification: B—s1, d0

Remark: The classes with their corresponding fire performance are given in annex A.

c) Field of application

This classification is valid for the following product parameters:

--- Characteristics as described in section II of this test reports.

This classification is valid for the following end use applications:

--- With all substrates classified as A1 or A2

--- With mechanically fixing

--- No joint

Limitations

This classification document does not represent type approval or certification of the product.

Warning:

The test laboratory has, therefore, played no part in sampling the product for the test, although it holds appropriate references, supplied by the manufacturer, to provide for traceability of the samples tested.



Unless otherwise agreed in writing, this document is issued by the Company subject to its General Conditions of Service printed overleaf, available on request or accessible at <https://www.sgs.com/en/Terms-and-Conditions>. Attention is drawn to the limitation of liability, indemnification and jurisdiction issues defined therein. Any holder of this document is advised that information contained hereon reflects the Company's findings at the time of its intervention only and within the limits of Client's instructions, if any. The Company's sole responsibility is to its Client and this document does not exonerate parties to a transaction from exercising all their rights and obligations under the transaction documents. This document cannot be reproduced except in full, without prior written approval of the Company. Any unauthorized alteration, forgery or falsification of the content or appearance of this document is unlawful and offenders may be prosecuted to the fullest extent of the law. Unless otherwise stated the results shown in this test report refer only to the sample(s) tested and such sample(s) are retained for 30 days only.

Attention: To check the authenticity of testing /inspection report & certificate, please contact us at telephone: (86-755) 8307 1443, or email: CN.Doccheck@sgs.com

1-2/F, Building 1, European Industrial Park, No.1, Shunhe South Road, Wusha, Daliang, Shunde District, Foshan, Guangdong, China 528300
中国·广东·佛山市顺德区大良街道办事处五沙社区居民委员会顺和南路1号欧洲工业园一号厂房首层、二层 邮编: 528300

t (86-757) 22805888 www.sgsgroup.com.cn
t (86-757) 22805888 sgs.china@sgs.com

Statement:

This declaration of conformity is only based on the result of this laboratory activity, the impact of the uncertainty of the results was not included.

Annex A

Classes of reaction to fire performance for construction products excluding floorings and linear pipe thermal insulation products

Class	Test method(s)		Classification criteria	Additional classification
A1	EN ISO 1182 ^a	and	$\Delta T \leq 30^{\circ}\text{C}$, and $\Delta m \leq 50\%$, and $t_f = 0$ (i.e. no sustained flaming)	-
	EN ISO 1716		$PCS \leq 2.0\text{MJ/kg}$ ^a and $PCS \leq 2.0\text{MJ/kg}$ ^{b c} and $PCS \leq 1.4\text{MJ/m}^2$ ^d and $PCS \leq 2.0\text{MJ/kg}$ ^e	-
A2	EN ISO 1182 ^a or	and	$\Delta T \leq 50^{\circ}\text{C}$, and $\Delta m \leq 50\%$, and $t_f \leq 20\text{ s}$	-
	EN ISO 1716		$PCS \leq 3.0\text{MJ/kg}$ ^a and $PCS \leq 4.0\text{MJ/m}^2$ ^b and $PCS \leq 4.0\text{MJ/m}^2$ ^d and $PCS \leq 3.0\text{MJ/kg}$ ^e	-
	EN 13823		$FIGRA_{0.2\text{MJ}} \leq 120\text{W/s}$ and $LFS < \text{edge of specimen}$ and $THR_{600\text{s}} \leq 7.5\text{MJ}$	Smoke production ^f and Flaming droplets/particles ^g
B	EN 13823	and	$FIGRA_{0.2\text{MJ}} \leq 120\text{W/s}$ and $LFS < \text{edge of specimen}$ and $THR_{600\text{s}} \leq 7.5\text{MJ}$	Smoke production ^f and Flaming droplets/particles ^g
	EN ISO 11925-2 ⁱ Exposure = 30s		$F_s \leq 150\text{mm}$ within 60s	
C	EN 13823	and	$FIGRA_{0.4\text{MJ}} \leq 250\text{W/s}$ and $LFS < \text{edge of specimen}$ and $THR_{600\text{s}} \leq 15\text{MJ}$	Smoke production ^f and Flaming droplets/particles ^g
	EN ISO 11925-2 ⁱ Exposure = 30s		$F_s \leq 150\text{mm}$ within 60 s	
D	EN 13823	and	$FIGRA_{0.4\text{MJ}} \leq 750\text{W/s}$	Smoke production ^f and Flaming droplets/particles ^g
	EN ISO 11925-2 ⁱ Exposure = 30s		$F_s \leq 150\text{mm}$ within 60 s	
E	EN ISO 11925-2 ⁱ Exposure = 15s		$F_s \leq 150\text{mm}$ within 20 s	flaming droplets/particles ^h
F	EN ISO 11925-2 ⁱ Exposure = 15 s		$F_s > 150\text{mm}$ within 20 s	

Unless otherwise agreed in writing, this document is issued by the Company subject to its General Conditions of Service printed overleaf, available on request or accessible at <https://www.sgs.com/en/Terms-and-Conditions>. Attention is drawn to the limitation of liability, indemnification and jurisdiction issues defined therein. Any holder of this document is advised that information contained hereon reflects the Company's findings at the time of its intervention only and within the limits of Client's instructions, if any. The Company's sole responsibility is to its Client and this document does not exonerate parties to a transaction from exercising all their rights and obligations under the transaction documents. This document cannot be reproduced except in full, without prior written approval of the Company. Any unauthorized alteration, forgery or falsification of the content or appearance of this document is unlawful and offenders may be prosecuted to the fullest extent of the law. Unless otherwise stated the results shown in this test report refer only to the sample(s) tested and such sample(s) are retained for 30 days only.

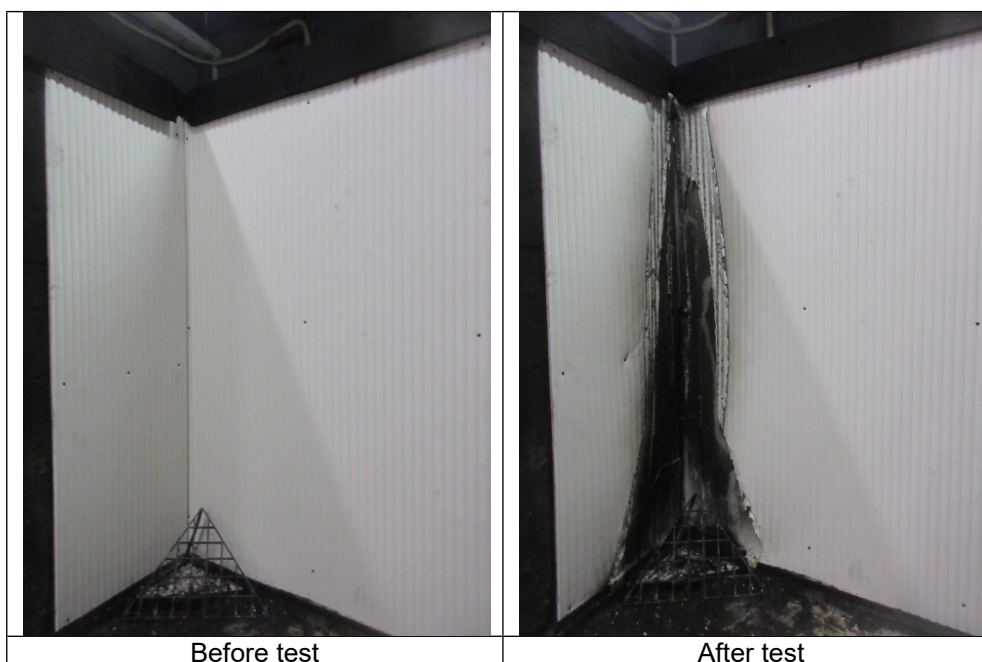
Attention: To check the authenticity of testing /inspection report & certificate, please contact us at telephone: (86-755) 8307 1443, or email: CN.Doccheck@sgs.com

1-2/F, Building 1, European Industrial Park, No.1, Shunhe South Road, Wusha, Daliang, Shunde District, Foshan, Guangdong, China 528300
中国·广东·佛山市顺德区大良街道办事处五沙社区居民委员会顺和南路1号欧洲工业园一号厂房首层、二层 邮编: 528300

t (86-757) 22805888 www.sgsgroup.com.cn
t (86-757) 22805888 sgs.china@sgs.com

- ^a For homogeneous products and substantial components of non-homogeneous products.
- ^b For any external non-substantial component of non-homogeneous products.
- ^c Alternatively, any external non-substantial component having a $PCS \leq 2,0 \text{ MJ/m}^2$, provided that the product satisfies the following criteria of EN 13823: $FIGRA \leq 20 \text{ W/s}$, and $LFS < \text{edge of specimen}$, and $THR_{600s} \leq 4,0 \text{ MJ}$, and $s1$, and $d0$.
- ^d For any internal non-substantial component of non-homogeneous products.
- ^e For the product as a whole.
- ^f $s1 = SMOGRA \leq 30 \text{ m}^2/\text{s}^2$ and $TSP_{600s} \leq 50 \text{ m}^2$; $s2 = SMOGRA \leq 180 \text{ m}^2/\text{s}^2$ and $TSP_{600s} \leq 200 \text{ m}^2$; $s3 = \text{not } s1 \text{ or } s2$
- ^g $d0 = \text{No flaming droplets/ particles in EN 13823 within 600 s}$;
 $d1 = \text{no flaming droplets/ particles persisting longer than 10 s in EN 13823 within 600 s}$;
 $d2 = \text{not } d0 \text{ or } d1$.
 Ignition of the paper in EN ISO 11925-2 results in a $d2$ classification.
- ^h Pass = no ignition of the paper (no classification);
 Fail = ignition of the paper ($d2$ classification).
- ⁱ Under conditions of surface flame attack and, if appropriate to the end-use application of the product, edge flame attack.

Photo Appendix:



SGS authenticate the photo on original report only

End of Report



Unless otherwise agreed in writing, this document is issued by the Company subject to its General Conditions of Service printed overleaf, available on request or accessible at <https://www.sgs.com/en/Terms-and-Conditions>. Attention is drawn to the limitation of liability, indemnification and jurisdiction issues defined therein. Any holder of this document is advised that information contained hereon reflects the Company's findings at the time of its intervention only and within the limits of Client's instructions, if any. The Company's sole responsibility is to its Client and this document does not exonerate parties to a transaction from exercising all their rights and obligations under the transaction documents. This document cannot be reproduced except in full, without prior written approval of the Company. Any unauthorized alteration, forgery or falsification of the content or appearance of this document is unlawful and offenders may be prosecuted to the fullest extent of the law. Unless otherwise stated the results shown in this test report refer only to the sample(s) tested and such sample(s) are retained for 30 days only.

Attention: To check the authenticity of testing /inspection report & certificate, please contact us at telephone: (86-755) 8307 1443, or email: CN.Doccheck@sgs.com

1-2/F, Building 1, European Industrial Park, No.1, Shunhe South Road, Wusha, Daliang, Shunde District, Foshan, Guangdong, China 528300
 中国·广东·佛山市顺德区大良街道办事处五沙社区居民委员会顺和南路1号欧洲工业园一号厂房首层、二层 邮编: 528300

t (86-757) 22805888 www.sgsgroup.com.cn
 t (86-757) 22805888 sgs.china@sgs.com